

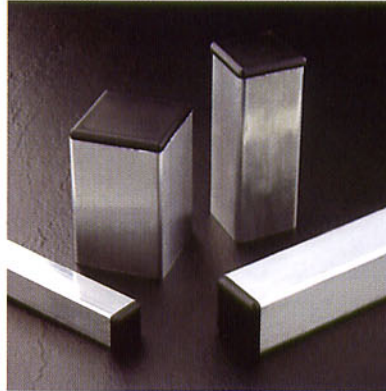


PLUGS non-threaded

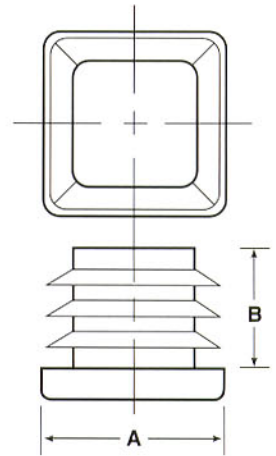
SQR Series Plugs for Square Tubing



Series SQR Square Plugs feature a series of externally tapered ribs designed to accommodate a wide range of tubing gauges while also satisfying the fit adjustments on tubing with inside dimensional fluctuations. The exterior ribs are designed to provide a sure grip inside a tube without the unsightly plastic shavings found on many straight wall glide installations.



MATERIAL: Low Density Polyethylene
COLOR*: Black



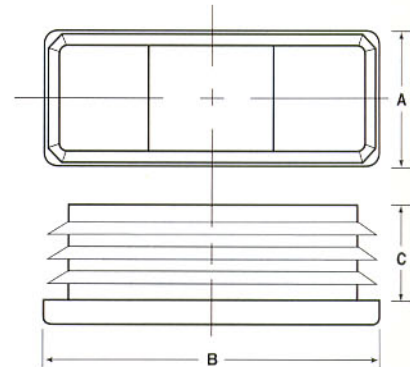
RER Series Plugs for Rectangular Tubing



Featuring the same external rib design of Series SQR Square Plugs, Series RER Rectangular Plugs are offered in a broad selection of width to length proportions to fit many special tubing shapes found on stands for computer terminals and office machines, display fixtures, and similar metal furnishings and equipment. Durable construction ensures exceptional performance in business and commercial applications.



MATERIAL: Low Density Polyethylene
COLOR*: Black



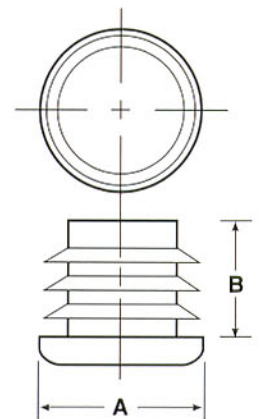
CCF Series Plugs for Round Tubing



Durable construction and excellent gliding characteristics recommend Series CCF Round Plugs for use on a wide range of metal furniture, appliances, and similar items. Because they feature the same external rib design of Series SQR Square and Series RER Rectangular Plugs, a secure fit is ensured. A thick, impact- and abrasion-resistant base makes Series CCF plugs ideal tubing closures for products subject to heavy duty service or exposure to adverse environments. None of Caplugs Rib-Lok Load-Bearing Furniture Glides are subject to rust or corrosion.



MATERIAL: Low Density Polyethylene
COLOR*: Black



non-threaded PLUGS



SQR Series

Caplug No.**	Dimensions				Packaging				Caplug No.**
	A - To Fit Tube Size O.D.	Wall Thickness in	B		Standard Carton		Mini Pak Quantity		
			in	mm	Shipping Wt.(Approx.)				
					lbs	kgs	No. of Pieces		
SQR-1/2-16-18	.500	16-18 Ga. (.065-.049)	.44	11	8	3.8	5000	1000	SQR-1/2-16-18
SQR-5/8-14-20	.625	14-20 Ga. (.083-.035)	.43	11	15	6.7	5000	1000	SQR-5/8-14-20
SQR-3/4-14-20	.750	14-20 Ga. (.083-.035)	.43	11	11	4.9	2500	500	SQR-3/4-14-20
SQR-7/8-14-20	.875	14-20 Ga. (.083-.035)	.43	11	18	8.0	3000	600	SQR-7/8-14-20
SQR-1-10-14	1.000	10-14 Ga. (.134-.083)	.43	11	19	8.7	2500	500	SQR-1-10-14
SQR-1-14-20	1.000	14-20 Ga. (.083-.035)	.43	11	19	8.6	2500	500	SQR-1-14-20
SQR-1-1/8-14-20	1.125	14-20 Ga. (.083-.035)	.49	12	16	7.3	1500	300	SQR-1-1/8-14-20
SQR-1-1/4-14-20	1.250	14-20 Ga. (.083-.035)	.52	13	15	6.7	1000	200	SQR-1-1/4-14-20
SQR-1-1/2-10-14	1.500	10-14 Ga. (.134-.083)	.52	13	18	8.1	1000	200	SQR-1-1/2-10-14
SQR-1-1/2-14-20	1.500	14-20 Ga. (.083-.035)	.52	13	19	8.6	1000	200	SQR-1-1/2-14-20
SQR-1-3/4-14-20	1.750	14-20 Ga. (.083-.035)	.52	13	15	6.8	500	100	SQR-1-3/4-14-20
SQR-2-10-14	2.000	10-14 Ga. (.134-.083)	.52	13	19	8.7	500	100	SQR-2-10-14
SQR-2-14-20	2.000	14-20 Ga. (.083-.035)	.52	13	19	8.6	500	100	SQR-2-14-20
SQR-2-1/4-10-14	2.250	10-14 Ga. (.134-.083)	.52	13	9	4.3	200	40	SQR-2-1/4-10-14
SQR-2-1/2-6-10	2.500	6-10 Ga. (.203-.134)	.56	14	14	6.2	300	60	SQR-2-1/2-6-10
SQR-3-3-6	3.000	3-6 Ga. (.239-.194)	1.00	25	20	9.4	150	30	SQR-3-3-6
SQR-4-3-6	4.000	3-6 Ga. (.239-.194)	1.00	25	16	7.3	75	15	SQR-4-3-6

RER Series

Caplug No.**	Dimensions					Packaging				Caplug No.**
	A in*	B in*	Wall Thickness in*	C		Standard Carton		Mini Pak Quantity		
				in	mm	Shipping Wt.(Approx.)				
						lbs	kgs	No. of Pieces		
RER-1/2x1-16-18	.500	1.000	16-18 Ga. (.065-.049)	.43	11	11	5.0	2500	500	RER-1/2x1-16-18
RER-5/8x1-1/4-14-20	.625	1.250	14-20 Ga. (.083-.035)	.43	11	14	6.2	2000	400	RER-5/8x1-1/4-14-20
REC-5/8x1-1/4-14†	.625	1.250	14 Ga. (.083)	.50	13	15	6.7	2000	400	REC-5/8x1-1/4-14†
RER-5/8x1-3/8-14-20	.625	1.375	14-20 Ga. (.083-.035)	.43	11	19	8.8	2500	500	RER-5/8x1-3/8-14-20
RER-3/4x1-1/2-14-20	.750	1.500	14-20 Ga. (.083-.035)	.43	11	19	8.5	2000	400	RER-3/4x1-1/2-14-20
RER-1x1-1/4-14-20	1.000	1.250	14-20 Ga. (.083-.035)	.50	13	20	9.0	2000	400	REC-1x1-1/4-14-20
RER-1x1-1/2-14-20	1.000	1.500	14-20 Ga. (.083-.035)	.50	13	14	6.3	1000	200	RER-1x1-1/2-14-20
RER-1x2-10-14	1.000	2.000	10-14 Ga. (.134-.083)	.50	13	15	7.0	1000	200	RER-1x2-10-14
RER-1x2-14-20	1.000	2.000	14-20 Ga. (.083-.035)	.50	13	15	6.7	1000	200	RER-1x2-14-20
RER-1x2-1/2-16-18	1.000	2.500	16-18 Ga. (.065-.049)	.50	13	20	9.2	1000	200	RER-1x2-1/2-16-18
RER-1x3-14-20	1.000	3.000	14-20 Ga. (.083-.035)	.51	13	17	7.8	500	100	RER-1x3-14-20
RER-1-1/2x2-1/2-12-16	1.500	2.500	12-16 Ga. (.105-.065)	.53	13	14	6.3	300	60	RER-1-1/2x2-1/2-12-16
RER-2x3-10-14	2.000	3.000	10-14 Ga. (.134-.083)	.52	13	15	6.7	250	50	RER-2x3-10-14
RER-40x80-3-4mm	40mm	80mm	3-4mm	.94	24	18	8.2	250	50	RER-40x80-3-4mm
RER-2x4-6-12 (50x100mm)	2.000	4.000	6-12 Ga. (.194-.105)	.65	17	17	7.7	200	40	RER-2x4-6-12

*Unless noted otherwise

CCF Series

Caplug No.**	Dimensions				Packaging				Caplug No.**
	A - To Fit Tube Size O.D.	Wall Thickness in	B		Standard Carton		Mini Pak Quantity		
			in	mm	Shipping Wt. (Approx.)				
					lbs	kgs	No. of Pieces		
CCF-1/2-16-20	.500	16-20 Ga. (.065-.035)	.45	11	13	6.0	10000	1000	CCF-1/2-16-20
CCF-5/8-14-20	.625	14-20 Ga. (.083-.035)	.44	11	12	5.5	5000	1000	CCF-5/8-14-20
CCF-3/4-14-20	.750	14-20 Ga. (.083-.035)	.44	11	17	7.5	5000	1000	CCF-3/4-14-20
CCF-7/8-14-20	.875	14-20 Ga. (.083-.035)	.44	11	18	8.0	4000	800	CCF-7/8-14-20
CCF-1-10-14	1.000	10-14 Ga. (.134-.083)	.44	11	21	9.7	4000	800	CCF-1-10-14
CCF-1-14-20	1.000	14-20 Ga. (.083-.035)	.44	11	22	10.1	4000	800	CCF-1-14-20
CCF-1-1/8-14-20	1.125	14-20 Ga. (.083-.035)	.52	13	19	8.7	2500	500	CCF-1-1/8-14-20
CCF-1-1/4-14-20	1.250	14-20 Ga. (.083-.035)	.52	13	14	6.3	1500	300	CCF-1-1/4-14-20
CCF-1-1/2-14-20	1.500	14-20 Ga. (.083-.035)	.52	13	18	8.0	1500	300	CCF-1-1/2-14-20
CCF-1-5/8-14-20	1.625	14-20 Ga. (.083-.035)	.52	13	15	6.7	1000	200	CCF-1-5/8-14-20
CCF-1-3/4-14-20	1.750	14-20 Ga. (.083-.035)	.59	15	17	7.6	1000	200	CCF-1-3/4-14-20
CCF-2-10-14	2.000	10-14 Ga. (.134-.083)	.59	15	11	5.1	500	100	CCF-2-10-14
CCF-2-14-20	2.000	14-20 Ga. (.083-.035)	.59	15	11	5.0	500	100	CCF-2-14-20
CCF-2-1/4-10-14	2.250	10-14 Ga. (.134-.083)	.66	17	15	6.6	500	100	CCF-2-1/4-10-14
CCF-2-3/8-10-14	2.375	10-14 Ga. (.134-.083)	.66	17	13	5.7	400	80	CCF-2-3/8-10-14
CCF-2-1/2-8-12	2.500	8-12 Ga. (.165-.109)	.69	18	15	6.9	400	80	CCF-2-1/2-8-12
CCF-2-1/2-14-20	2.500	14-20 Ga. (.083-.035)	.69	18	13	6.0	400	80	CCF-2-1/2-14-20



PLUGS Polaris Vinyl

TP Series Tapered Vinyl Plugs

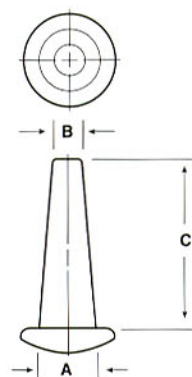


Series TP Vinyl Plugs are designed with a distinct tapered configuration, making them ideal for plugging small holes ranging in diameter from .070" to .343". Flexibility of the vinyl allows these plugs to push in and pull out easily.

They are color coded for ease of size identification.



MATERIAL: Vinyl
COLOR*: See Chart



VTP Series Flexible Vinyl, Tapered Plugs

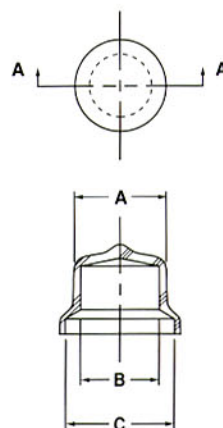


Series VTP Vinyl Plugs provide a snug fit when pushed into open ports, ensuring a tight closure that will not pop out accidentally during processing or shipping.

A simple tug on the flanged lip of an installed VTP breaks the seal for easy removal. The plugs are molded from a specially formulated, non-shredding vinyl that offers an attractive, high gloss finish to products.



MATERIAL: Vinyl
COLOR*: Red





TP Series

Caplug No.	Color	Dimensions						Packaging				Caplug No.
		A		B		C		Standard Carton		Mini Pak Quantity		
		in	mm	in	mm	in	mm	Shipping Wt. (Approx.)			No. of Pieces	
lbs	kgs											
TP-4	Red	.15	3.81	.07	1.78	1/2	12.70	2	0.9	5000	1000	TP-4
TP-6	Blue	.20	5.08	.10	2.54	1/2	12.70	3	1.3	5000	1000	TP-6
TP-8	Green	.25	6.35	.14	3.56	3/4	19.05	7	3.1	5000	1000	TP-8
TP-9	Brown	.30	7.62	.14	3.56	1	25.40	8	3.6	5000	1000	TP-9
TP-10	Orange	.31	7.87	.16	4.06	3/4	19.05	9	4.0	5000	1000	TP-10
TP-11	Gray	.31	7.87	.19	4.83	1	25.40	13	5.8	5000	1000	TP-11
TP-12	Red	.34	8.64	.19	4.83	3/4	19.05	10	4.5	5000	1000	TP-12

VTP Series

Caplug No.	To Fit		Dimensions						Packaging				Caplug No.
	Thread Size	Thread Size	A		B		C		Standard Carton		Mini Pak Quantity		
			in	mm	in	mm	in	mm	Shipping Wt. (Approx.)			No. of Pieces	
lbs	kgs												
VTP-05	-	1/4 STD	.195	4.95	.125	3.18	.300	7.62	3	1.4	5000	1000	VTP-05
VTP-1	-	5/16 STD	.290	7.37	.210	5.33	.406	10.31	5	2.3	5000	1000	VTP-1
VTP-2	1/8 NPT	3/8 STD	.400	10.16	.290	7.37	.437	11.10	6	2.7	5000	1000	VTP-2
VTP-25	-	7/16 STD	.445	11.30	.340	8.64	.500	12.70	9	4.1	5000	1000	VTP-25
VTP-3	1/4 NPT	1/2 STD	.530	13.46	.365	9.27	.555	14.10	15	6.8	5000	1000	VTP-3
VTP-35	-	9/16 STD	.570	14.48	.445	11.30	.625	15.88	9	4.1	2500	500	VTP-35
VTP-4	3/8 NPT	5/8 STD	.640	16.26	.520	13.21	.750	19.06	12	5.4	2500	500	VTP-4
VTP-5	1/2 NPT	3/4 STD	.800	20.32	.682	17.32	.937	23.80	13	5.9	2500	500	VTP-5
VTP-55	3/4 NPT	7/8 STD	.870	22.10	.732	18.59	1.000	25.40	9	4.1	1000	200	VTP-55
VTP-6	3/4 NPT	1 1/16 STD	1.025	26.04	.891	22.63	1.188	30.18	10	4.5	1000	200	VTP-6
VTP-7	1 NPT	1 3/16, 1 1/4, 1 5/16 STD	1.275	32.39	1.147	29.13	1.453	36.91	13	5.9	1000	200	VTP-7



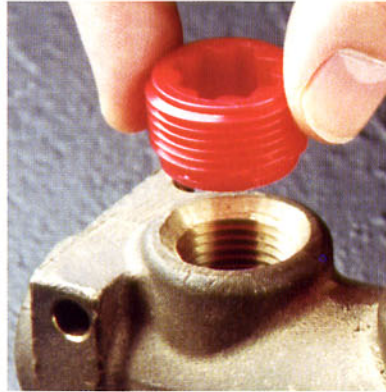
PLUGS threaded

P Series Plastic Threaded Plugs for Pipe Fitting

EXPANDED

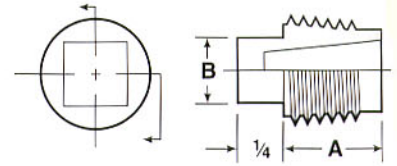


Series P Pipe Plugs are available in three styles: square head, round head and recessed socket. They are molded in high density polyethylene and are ideal for keeping moisture, dirt and other contaminants from NPT-threaded ports.

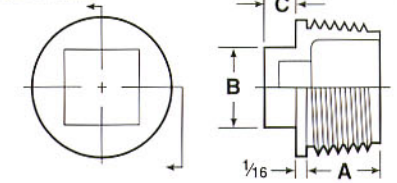


MATERIAL: High Density Polyethylene
COLOR*: Red

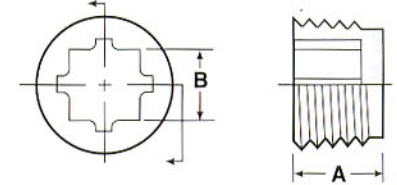
Tapered Thread



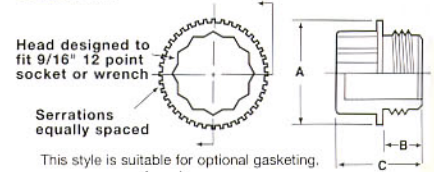
Tapered Thread



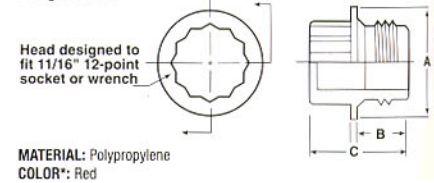
Tapered Thread



Straight Thread



Straight Thread



Straight Thread

